

Machine description / technical specifications:

LANTECH TRAY- / LID FORMING MACHINE TE-1000 (Hotmelt-closure):



The design of the machine incorporates the latest developments in forming a tray / lid. It is an extremely user-friendly machine, which is simple to adjust.

From a horizontal magazine a blank is taken with vacuum and put in position. A mechanic pusher brings the blank to the forming mould.

During the transfer a very accurate timing of the glue injection is achieved on the long flaps. After reaching the forming station, the blank will be stamped through the adjustable forming unit; the sides of the tray will be simultaneous pressed on 4 sides.

The formed tray/ lid will fall on a separate conveyor which is not part of this Tray- / Lid Former.

The TE-1000 is equipped with several features such as:

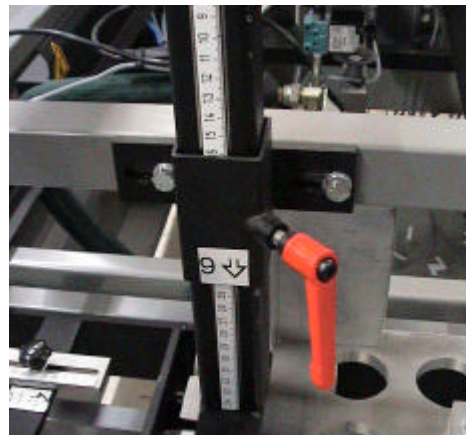
Touch Screen Panel:

The operator control box is standard equipped with a Touch Screen Panel, on which all necessary settings can be made. All possible messages will appear on the Touch Screen Display.



Easy tuning:

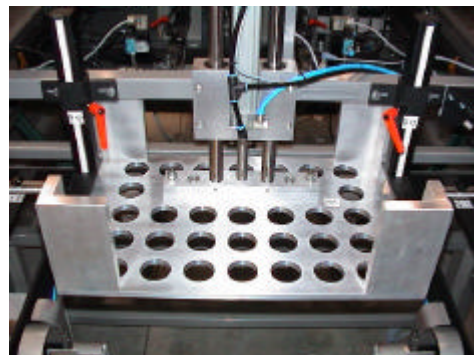
The machine is easy to tune and convert to another format. Adjustment by toggle and measure scales.



Solid construction:

The forming mould is equipped with pressure cylinders, to prevent 'smearing' of the glue.

Very solid construction for long life duration, forming mould can be ordered afterwards when changing to another tray size.



A-brand components:

All parts of the machine are equipped with reliable A-brand components.

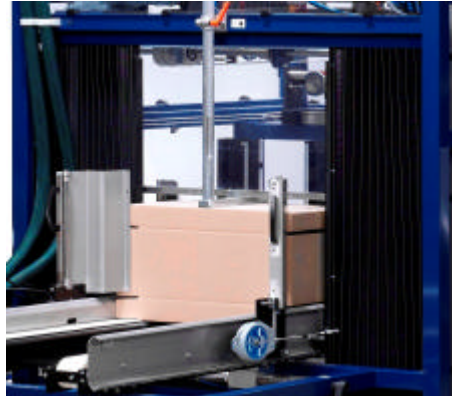


Simplicity:

By application of simplicity in constructions and reliable components, maintenance will be minimized.

Ergonomic blank magazine:

In the ergonomic developed blank magazine, blanks can easily be loaded due to the "walk-in" magazine. The magazine has in basic execution an effective length of 840 mm and with this length about 280 blanks can be stored. The blanks are standing on side conveyors which transport them step by step towards the pick up section. The adjustments of the side guidings of the blank magazine are done by hand wheels. The adjustments can easily be read from counters and measure scales.



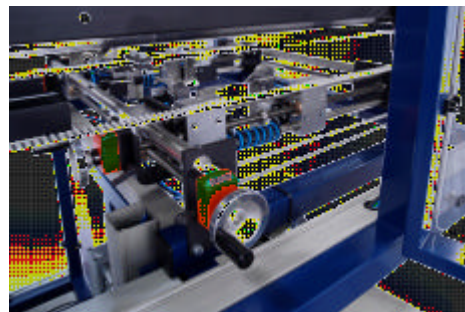
The vacuum pick up frame:

From the magazine a blank is taken with vacuum and put in position. Four snap-lock clips transport the blank to the forming head position. During the transport the lid is glued, in order to form the lid.



Adjustable forming unit:

The folding unit is adjustable in length and width and can be adjusted to the correct tray size. The adjustments are done by hand wheels and can easily be read from counters and measuring scales.



Execution of the tray erector TE-1000

- Hotmelt closing
- Wide range of tray sizes
- Shielding 6 mm transparent (clear)
- Blank magazine with easy change of formats
- Warning “empty magazine” for blanks
- Tunnel on discharge side of the machine (safety)
- Warning by flash light on the operator panel

Protective coating and environment:

Protective coating colour RAL nr. 7011 (grey)

The machine is suitable for operation in a dry environment at a temperature between +3°C and +40°C.

In case of operation of the machine in areas with:

- high humidity
- dusty and/or dirty environment
- explosive/hazardous environment
- salt water or other corrosive materials

the machine can be configured as such against extra price.

Specification of frame:

- Machine output from right or left, to be determined later.
- Delivery of the machine in conformity with CE norm.
- The machine will be delivered inclusive 1 manual.
(Operator manual in language of delivery. Technical manual in English).
More specimens are available against surcharge.

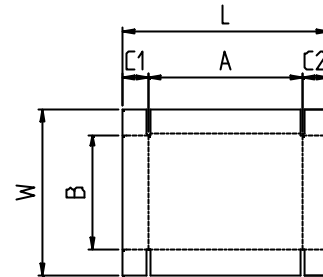
Possible options in executions:

- Other RAL colour than RAL 7011
- “Blank magazine almost empty” detection with beacon.
- Machine in stainless steel or other protective execution.

Size of trays / lids:

The tray - / lid dimensions, that can be processed on this Lantech tray - / lid forming machine are:

	Minimum	Maximum
Tray- / Lid Length A	180 mm	600 mm
Tray- / Lid Width B	100 mm	400 mm
Tray- / Lid Height C1=C2	40 mm	100 mm
Blank Length L	290 mm	800 mm
Blank Width W	180 mm	600 mm



Corrugated quality: FEFCO 0452 / 0453

Capacity:

Capacity: maximum 20 tray / lids per minute depending on quality.

Technical Specifications:

Electrical connection	:	3 x 400 - 50Hz. – N - earthed
Installed power	:	3,8 kW
Compressed air connection	:	1/4"
Air consumption	:	4 NI / case
Weight of the machine	:	450 Kg.
Machine length	:	2720 mm
Machine width	:	1560 mm
Machine height	:	1800 mm ± 30 mm
Infeed height Magazine	:	500 mm ± 30 mm
Outfeed height	:	800 mm ± 30 mm

Samples:

The necessary 200 samples of each case size, for testing the machine, must be delivered to our address, carriage paid and free of charge.

You are kindly requested to add 1 bag of hotmelt granulate which is in use at your works.

Lay-outs:

Machine lay-out TE-1000

Technical specifications TE-1000:

Control box	:	Rittal
Operating box	:	Bopla
Push buttons	:	Klöckner Moeller
Selector switches	:	Klöckner Moeller
Safety switches	:	Merlin Gerin
Thermal cut-outs	:	Klöckner Moeller
Magnetic switches s	:	Klöckner Moeller
Relays	:	Omron
Connecting terminals	:	Phoenix
Main switches	:	Klöckner Moeller
Safety	:	Pilz
PLC	:	Siemens S7 313 C
Frequency control	:	Lenze / Panasonic (only choice because working of the machine)
Photo cells	:	Omron
Proximity switches	:	Omron
Pneumatic components	:	Festo
Pneumatic connecting components	:	Festo
Drives	:	SEW
Vacuum venturi	:	Festo
Electrical connection	:	3 x 400V - 50Hz. -Mp- earthed
Compressed air connection	:	1/4"
Hotmelt installation	:	Robatech Concept 4

Deflections in execution and to be applied components, which result in extra work fall out of the purpose of this quotation.